

“SAFE PLACES SAFE PEOPLE”
“GET AWAY FROM DANGER”
Officer Script 06/22



Activity Book
Pages 10-12

Hi kids...

Today we're going to talk about Safe Places and Safe People...

Before we start a new lesson, let's review our 6 senses and how our senses keep us safe every day.

Can everyone follow me?

SIGHT - Everyone blink your eyes 3x – your eyes watch for things around you to keep you safe

HEARING - Point to your ears – your ears hear sirens and cars coming too!

SMELL - Point to your nose your nose smells things like a hot pizza or maybe even a burning fire!

POINT TO YOUR MOUTH - Your sense of taste lets you know how good ice cream tastes..but also if something is not safe, or poisonous **AND Your VOICE** lets you shout for help when you need it!

WIGGLE YOUR FINGERS - That's your sense of touch! your fingers will let you know if things are too hot, or dangerous to touch.

AND THE 6TH SENSE -- is that feeling in our tummy that something might feel unsafe...if this happens to you immediately tell an adult you trust like a teacher, parent or guardian...

That's great! That's our 6 senses review.

Today, we are going to learn an important lesson from ROCKET... The difference between a safe and unsafe person and a safe and unsafe place.

When you are walking to and from school, in your neighborhood, or at a park, it's important to know what places are safe to go to, and what people are safe to talk to. If you get lost or separated and find yourself alone and need help, you can find a safe person to help you.

First, let's talk about a safe person...

A SAFE PERSON is someone you TRUST...someone who cares about you, that listens to you, that helps you when you need help and will not hurt you.

OK Kids, your teacher is a safe person you can trust and talk to.... give me 2 Thumbs up if you agree that your Teacher is someone you can Trust and Talk to....yes, great, you can trust your teacher as a safe person.

Give me 2 thumbs if your Doctor or school nurse are safe people... yes, great, your doctor, or nurse...care about you, listen to you and will help you if you are sick.

How about PARENTS AND GUARDIANS that you KNOW... Give me 2 thumbs up if they help you. Great! They are people that can help you! Remember, only talk to parents and guardians, that you KNOW.

What about a crossing guard? 2 thumbs up if you can trust them to help you when you cross the street...

We need to be very careful when we see people we do not know...there are some people we should not talk to: If some STRANGER comes up to you when you are walking home from school, and offers you CANDY...

Don't talk to them, and don't take the candy. Run away and tell An adult that you trust (like a teacher).

Does everyone agree? Show me 2 thumbs up...

If someone you don't know asks you to get into their car, or offers you a ride homedon't get in, don't talk to them, run away and go tell an adult you trust.....2 thumbs up if you agree

If you see 2 people fighting on the street...always stay far away from them.
(2 thumbs up if you agree)

If any of these things happen to you or you see something that doesn't make you feel right, go find an adult that is safe and you trust and tell them.A police officer may be a stranger you don't know, but they are someone that you can talk to and that can help you.

Now let's talk about safe places: A safe place is like a supermarket or store that has its lights on and may also have security cameras. This is somewhere you can go to if you need help.

Give me 2 thumbs up if you think your school is a safe place. Great! It is a safe place to be!

OK, kids. Give me 2 thumbs up if a gas station or 7-11 is a safe place? Yes! Those are safe places because they are there to help people. It's not dangerous. They have their lights on, and they have cameras on too.

2 thumbs up if a supermarket is a safe place? But not all places are safe. If you see a big, stinky, Trash Area, with broken glass...2 thumbs up if you think this is UNSAFE to play?

How about playing near the back of a store, in a dark alley, by old, empty buildings, or by RAILROAD TRACKS, (2 thumbs up if you think these are UNSAFE AREAS)

Great! Wow! We learned a lot today....well done everyone...you're doing great....

Now it's time for a quick REVIEW

– Remember, *A safe person is someone you can trust, that cares about you, that listens to you, and will help you.*

– there are safe people that you can TRUST....like teachers, police officers, doctors, and your parents or guardians.

– ALWAYS be careful when you see a STRANGER... do NOT accept food or go with them in a car....if this happens to you run away and tell an adult you trust, like your parents or an officer

– if you get lost or need help there are many safe places in your neighborhood to go - like your school, a hospital, police station, or a well-lit market or restaurant...

- Stay AWAY from dangerous places like railroad tracks, dark alleys, places with broken windows and smelly trash.

That was great kids!

When you have completed this lesson with your teacher, they will have a special certificate for each of you.

Now let's take the ROCKET PROMISE to be SAFE

Raise your hand and Repeat after me:

I promise (kids: I promise)

To always use my 6 senses (to always use my 6 senses)

To stay safe (to stay safe)

I'll see you soon!

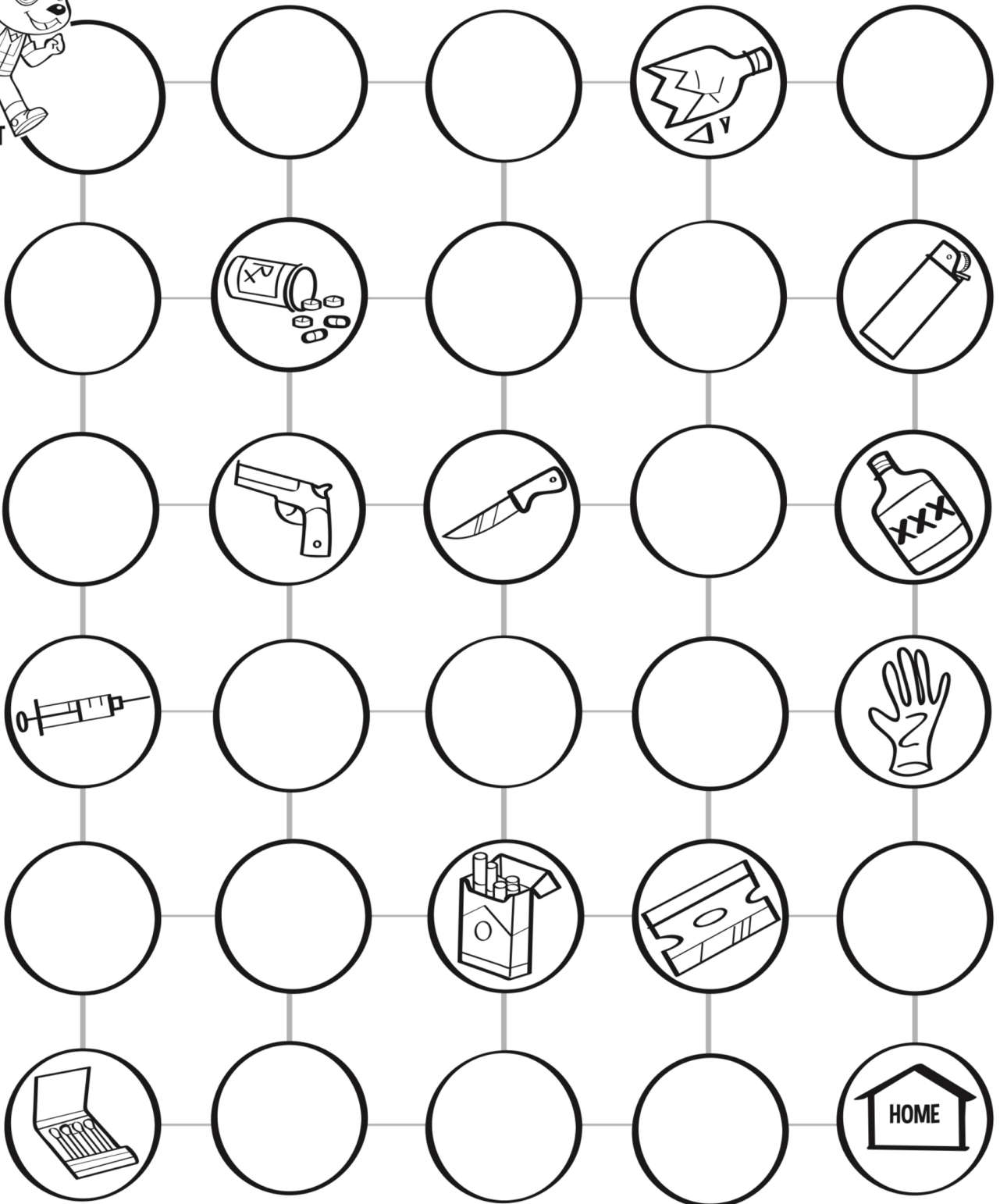
REMEMBER TO USE YOUR SENSES TO KEEP YOU SAFE!

REVIEW QUESTIONS:

- Who are safe and trusted people in your life?
- What makes someone a safe person? (trusted adult) An unsafe person? (stranger)
- How do you feel when you're with a safe person? An unsafe person?
- Where in your body do you feel something is not right...? (6th sense)
- What makes a place safe? What makes a place unsafe?
- Where are some safe places you can go in your town?
- Is it safer to walk near a well-lit market with cameras or a trash can? Is it safer to be near a hospital or a construction zone?

GET AWAY FROM DANGER

Find Rocket's safe path home by coloring and connecting the dots while avoiding dangerous objects.  



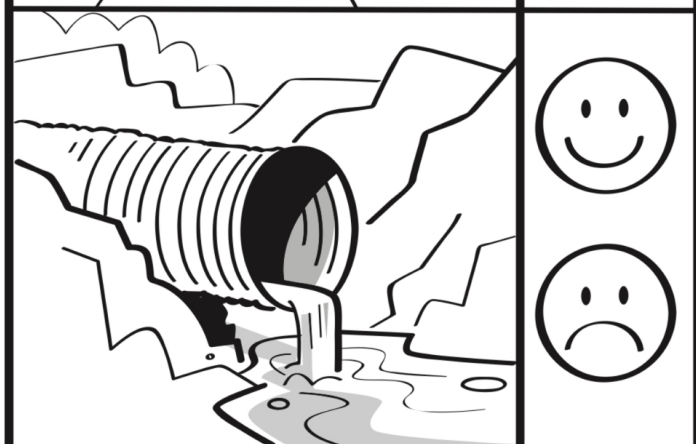
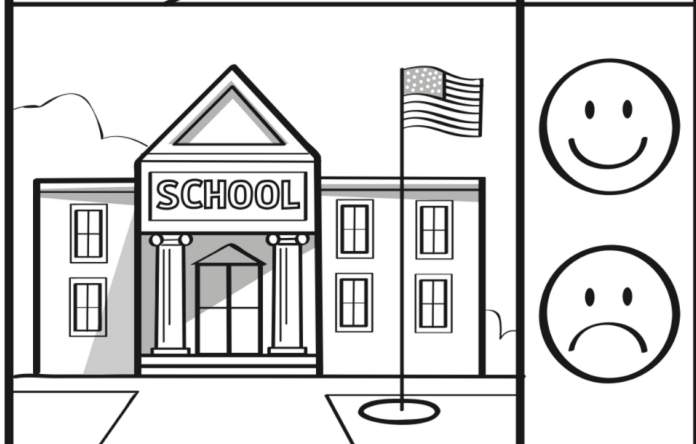
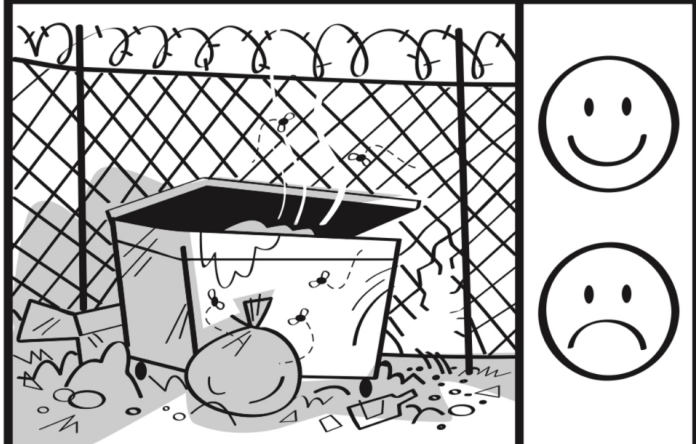
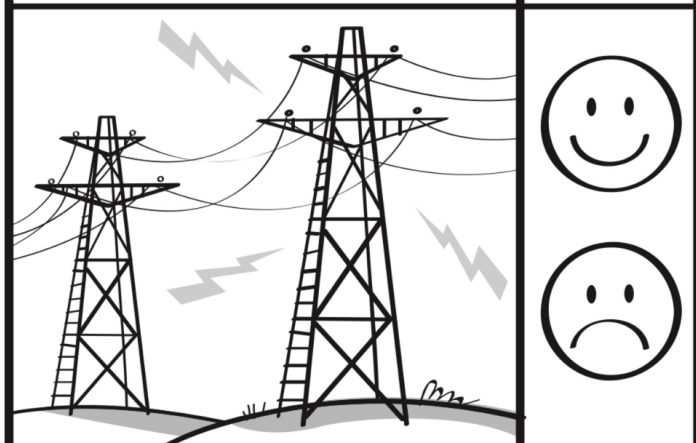
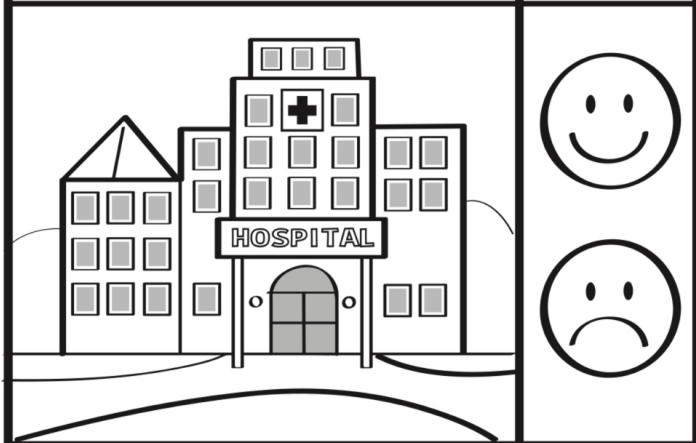
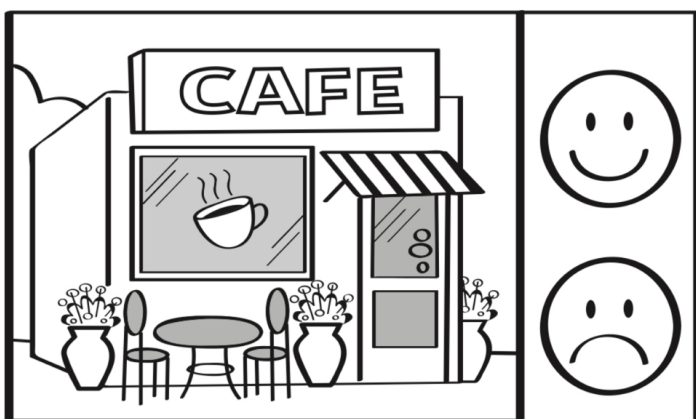
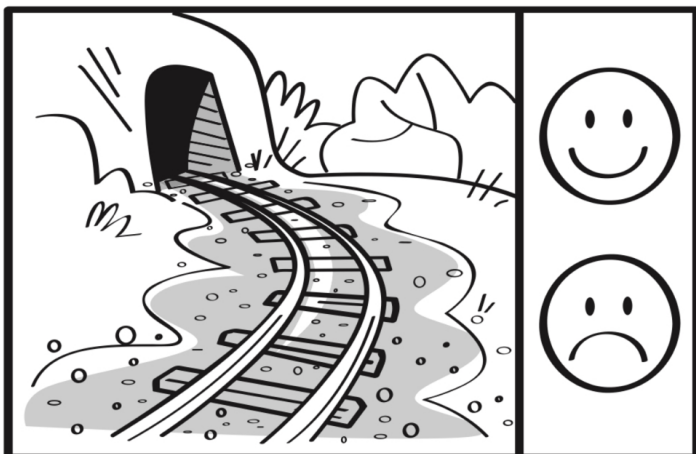
FIND SAFE PEOPLE AND PLACES

There are people and places that are safe and others that are not safe.



Color the smiley face if the person makes you feel safe and the sad face if they do not make you feel safe.





Color the smiley face if places are SAFE and the sad face if NOT SAFE.



Congratulations!

For Completing the lesson
Find Safe Places and People

You're a Rocket Rules
Safety Super Star!

Instructor signature _____ Date _____
Signature *Rocket*  _____



Congratulations!

For Completing the lesson

Get Away from Danger

You're a Rocket Rules

Safety Super Star!



Instructor signature _____

Signature Rocket  _____ Date _____